



**HIGH VALUE**  
**HOUSING & DEVELOPERS PVT LTD.**



**Sri Aishwaryam Nagar**

**@ ORATHUR**

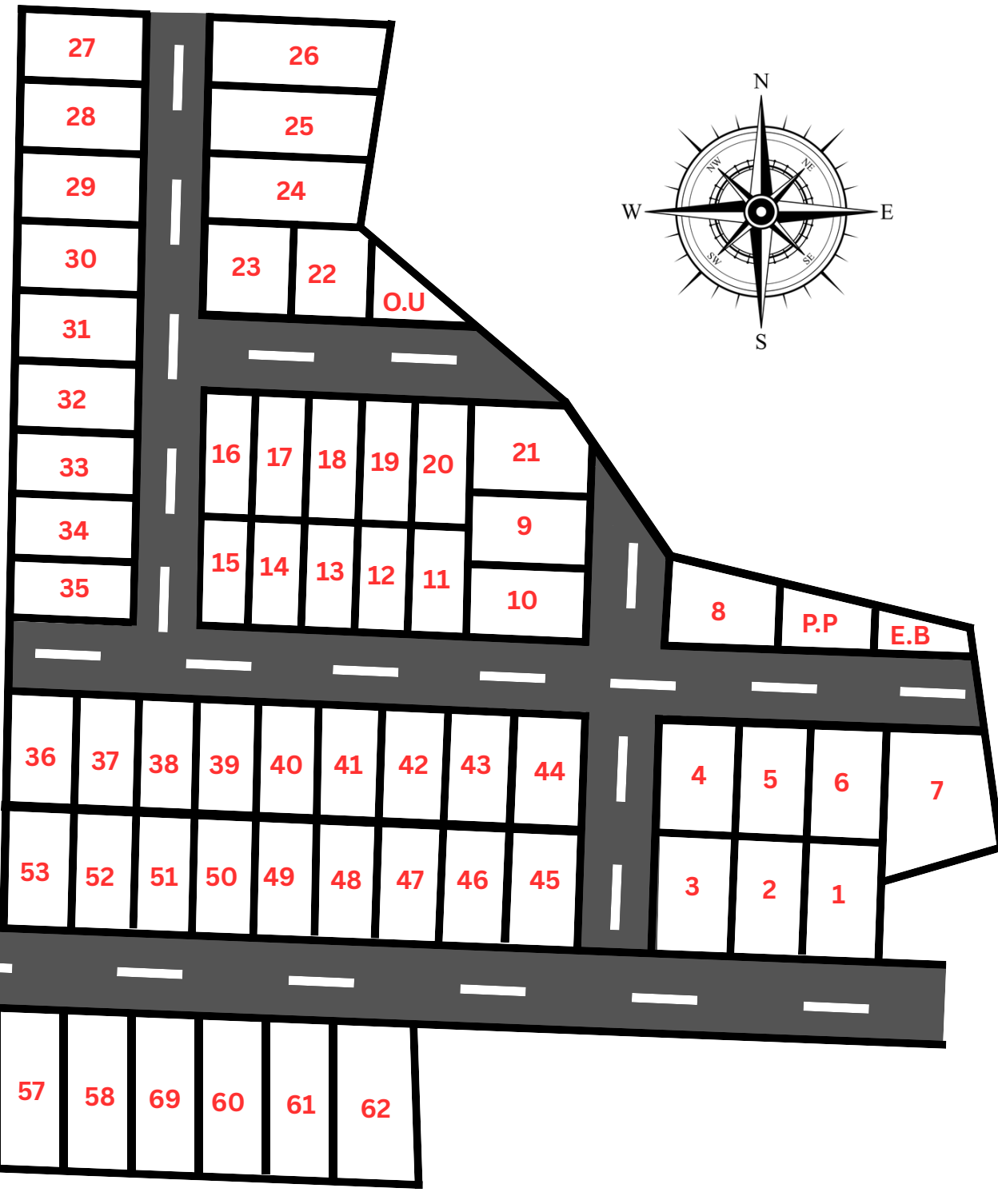
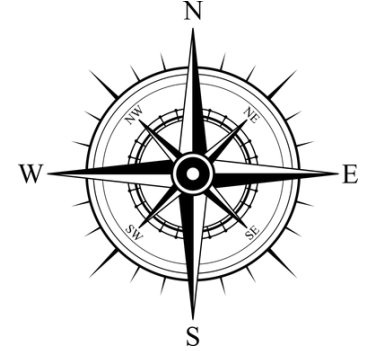
**GUDUVANCHERI - PADAPPAI**



**For Booking :**

**+91 70105 57210**

# HIGH VALUE HOUSING & DEVELOPERS PRIVATE LIMITED



**+91 70105 57210**

**Door No. 29, Mahalakshmi Street,  
Anantha Narayana Puram, Guduvancheri - 603202.**

# Site Amenities

## LOCATION HIGHLIGHTS :

- Neelamangalam Bus stop - 1.5 km
- Kuthanur Bus Stop - 2.5 km
- Guduvancheri Railway Station - 4.7 km
- Potheri Bus Stop - 7 km
- Kattankulathur - 8 km
- Zoho Corporation - 9 km
- Kilambakkam Bus Terminus - 9 km
- Tambaram - 17 km



Bus Facility for  
Every **10** Mins

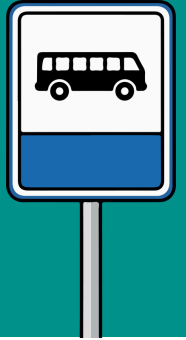
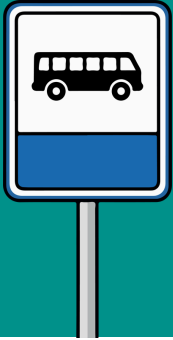
## Bus Stops :

**Neelamangalam Bus Stop ( 118N )**

Neelamangalam - West Tambaram

**Kuthanur Bus Stop ( 118N )**

Kavanur Bus Stop - Tambaram



## NEARBY SCHOOLS :

- Bharathiyar Nursery & Primary School - 2 km
- Government High School (Neelamangalam) - 2.5 km
- Jai Santhoshi vidyalaya nursery Primary School - 3 km
- Roshini matriculation school - 3.5 km
- Viruthi Vidyalaya Nursery Primary school - 3 km
- St.John's Matriculation Higher Secondary school - 5.5 km
- Alwin International public School (Padappai) - 8 km
- Eurokids preschool - 4 km
- Kidzee Playschool - 5 km
- Neelan Matriculation School - 5 Km
- Holy sai International School - 5 Km
- SRM Public school Guduvancheri - 9km

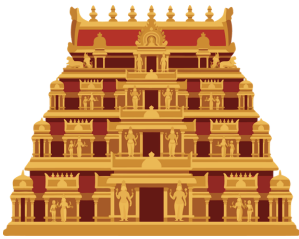
## NEARBY COLLEGES :

- Peri Institute of Technology - 8 km
- SRM Institute - 9 km
- Crescent College - 9 km
- Rrase College of engineering - 8 KM
- Hindustan enginerring & technology - 8 km



## HOSPITALS :

- Velicham Hospital (24 Hours) - 4 km
- Arokia Annai clinic (Kuthanus) - 3 km
- K.R. Hospital (Guduvanchery) - 5 km
- Deepam Multispeciality Hospital - 6 km
- SRM Hospital - 9 km
- One health Super Speciality Hospital - 8 km
- Government Hospital (Nandivaram) - 6 km
- Sayee Hospital (Padappai) - 7 km
- Government Hospital (Padappai) - 6 km



- Sivan Temple Neelamangalam
- Sri lakshmi narayana Perumal temple
- Shirdi Sai baba Temple
- Arulmigu nandeeswarar temple



- CSI St.John's Church
- Sagaya Annai church
- Good Shepherd RC church



- Jumma Masjid Guduvancheri
- Jumma Masjid Padappai



## INDUSTRIES :

- Rane Automative India Pvt Ltd - 7 km
- Zoho Corporation - 8 km
- Special Economic zone Mahindra world city - 13 km
- oragadam Industrial Corridor -15 km
- Gateway office Parks Perungalathur - 15 km

For Bookings :  
**+91 70105 57210**





## BANKS :

- HDFC Bank Guduvanchery - 6 km
- SBI Bank (Padappai) - 6 Km
- South indian bank (Padappai) - 6 km
- ICICI Bank - 6.5 km
- IDBI Bank - 6.5 km
- Canara Bank - 6 km
- Tamilandu merchantile guduvancheri Bank - 6.5 km

## MARKET PLACE :

- udayam Supermarket Madambakkam - 5 km
- Mithran Super Stores Guduvancheri - 6 km
- Rogers family mart Guduvanchevi - 6 km
- Sathya Gudavancheri - 6 km
- Girias Gudavancheri - 6 km
- GRT, Kalyan Jewellers - 6.5 km
- Max Guduvancheri - 6.5 km
- Zudio Guduvancheri - 6.5 km
- Ramraj Cotton Guduvancheri - 6 km



## Entertainment & Tourist places

- Kalaignar Centenary dimake Park (kilambakkam) - 9 km
- Arignar Anna Zoological Park (vandalur) - 10 km
- Seven Screen's cinemas (Kilambakkam) - 8 Km
- MVR Cinemall (Nandhivaram) - 7.5 km
- Kannappa cinemas (Padappai) - 6 km
- Happy Kids play (Indoor) Padappai - 7 Km
- Go Bananas Kids Soft play (Thailavaram) - 6 km



For Bookings :

**+91 70105 57210**



**HIGH VALUE  
HOUSING & DEVELOPERS PVT LTD**

**90% BANK LOAN AVAILABLE !!**

**CMDA / TN RERA APPROVED**

**OUR BANKING PARTNERS**



For Booking :

**+91 70105 57210**

# HIGH VALUE

# HOUSING & DEVELOPERS PVT LTD

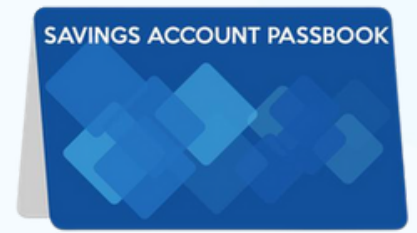
# NECESSARY DOCUMENTS FOR LOAN



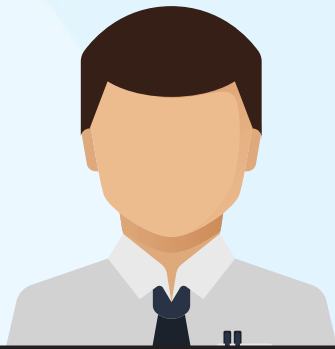
**AADHAR CARD**



**PAN CARD**

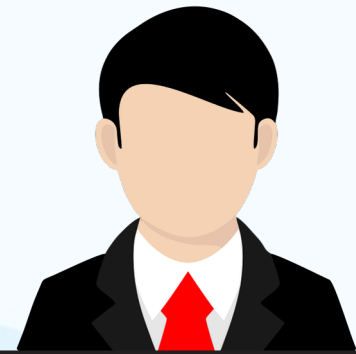


**BANK STATEMENT**



## SALARY PERSON

- AADHAR CARD
- PAN CARD
- ID CARD
- SALARY SLIP FOR LAST 6 MONTHS
- BANK STATEMENT FOR LAST 1 YEAR
- 3 YEARS STABILITY WORK PROOF



## BUSINESS PERSON

- AADHAR CARD
- PAN CARD
- ITR FOR LAST 3 YEARS
- GST DOCUMENTS
- BUSINESS EMAIL
- LETTER PAD
- ADDRESS PROOF CURRENT &
- SAVING ACCOUNT BANK STATEMENT FOR LAST 1 YEAR

For Booking :

**+91 70105 57210**

# **HIGH VALUE HOUSING & DEVELOPERS PVT LTD**



***“ CREATE YOUR FUTURE ASSETS ”***

 **+91 70105 57210**

 **highvaluehousing@gmail.com**

 **No.29, Mahalakshmi Street,  
Anantha Narayana Puram,  
srinivasapuram, Guduvancheri,  
Chennai - 603202**

